

Winterset Waves



October 2020

AMENDMENT

TO

WINTERSET RV RESORT

Guidelines, Rules and Regulations

(September 1, 2018)

Paragraph 12 – SUB-LEASING is hereby amended to add the following sentence after the first sentence:

“Resident Owners can only rent their homes out twice (2) a year with background checks being carried out by the Resort Office before rentals are approved.”

Amended September 9, 2020

Congratulations!

October Yard of the Month



We congratulate Gary Payson and Maryann Couvertier, Lot 43, winners of October, 2020 “Yard of the Month” Award.

They will receive a \$25 gift card to Home Depot and a plaque placed in their yard for the month.



Winterset RV Resort remembers 9/11 with the handiwork of Marie Wallace’s decorating skills.

Thank you Marie!!

Homes for Sale at Winterset



Lot 24
1994
\$34,900



Lot 104
1985
\$27,500



PRE-OWNED HOMES

NEW HOMES



Lot 141
2019 Chariot Eagle
\$67,900.00
Move in ready

**WANT TO SEE THESE HOMES NOW?
Call Barbara to schedule a showing!
941-962-6260**

October

Happy Anniversary

<i>Doug & Barb Roper</i>	<i>October 5, 1991</i>
<i>Michael & Nancy Miller</i>	<i>October 5, 1967</i>
<i>Andrew & Sharon Weston</i>	<i>October 7, 1969</i>
<i>Jay & Grace Hutchinson</i>	<i>October 8, 1997</i>
<i>Pete & Betsy Padden</i>	<i>October 9, 1969</i>
<i>Bud & Shelly Wright</i>	<i>October 10, 1998</i>
<i>Bill & Nancy (Gene) John</i>	<i>October 12, 1956</i>
<i>Don & Ruth VanderRoest</i>	<i>October 13, '968</i>
<i>Peter & Elke Weigelt</i>	<i>October 11, 2010</i>
<i>Paul & Ruth Ann Metzgar</i>	<i>October 14, 1976</i>
<i>Claude & Christine Johnson</i>	<i>October 16, 2015</i>
<i>John & Marge Boggess</i>	<i>October 18, 1963</i>
<i>Thomas & Kay Robb</i>	<i>October 19, 1994</i>
<i>Willie & Edith Lawrence</i>	<i>October 19, 1964</i>
<i>Del & Gayle Weissenbach</i>	<i>October 24, 1965</i>
<i>John & Debra Campbell</i>	<i>October 27, 1979</i>

Happy Birthday

October

3	Robert Davis	17	Cathy Paradis	23	Paul Metzgar
5	Celine Gaudet	17	Shirley Pothier	24	Lynn Wright
7	Elaine Tyler	18	Ralph Abt	25	Joe Sardo
9	David Ballentine	18	James Vanderlaan	25	Elke Weigelt
9	Lysa Tradup	19	Kathy Planavsky	27	William Caram
10	Phillip Pryor	19	Tom Robb	27	Billie Humberger
15	Deborah Torres	20	J.R. Medendorp	28	Becky Rodeman
16	Ann Dunlop	21	Charles Miller	28	Jim DeFrance
		23	R.C. Wallace	30	Judy Garnham



COVID-19 GUIDELINES UPDATED 9/30/20:

- Residents and guests must wear masks and social distance while inside the Clubhouse and Offices.
- Clubhouse and pool access is limited to residents and overnight guests of residents only.
- The pool capacity is the posted bathing load of 16 people.
- Planned event hosts must present a plan to be approved before hosting a gathering.
- The maximum number of persons allowed to gather should not exceed 50 people at any one time.
- No Activities that promote social contact, such as dancing, are allowed.
- No events where we are inviting in the general public or neighboring communities to attend are allowed.
- Most importantly, no food events are allowed unless catered, or a plan to distribute the food safely, has been approved in advance.
- Although we have increased the scheduled cleaning of the facilities to help combat COVID-19, using the facilities and participating in any Activities is at your own risk.



DATE: September 4, 2020

TO: Winterset Resort Residents

FROM: Douglas Roper, Community Manager

ANNUAL NOTICE OF LOT RENT AMOUNT

Dear Homeowner,

Each year, the owners of Winterset Resort ask management to complete a market study to determine where Winterset Resort's rents are within the market. This analysis seeks to correlate where our rents are in relation to those of other properties of like size and operation in our immediate area, as well as any increases in operating expenses from the subsequent year.

The good news this year is that it was determined to leave the current annual lot rent amount of \$435.00 per month unchanged, effective November 1, 2020 for another year.

In addition, the monthly rates for seasonal RV stays in all categories will remain the same for another year. Only the daily and weekly rates will see a few dollars increase.

Lastly, please be advised that the State of Florida will require that a 7.0% sales tax be charged on Storage Rates from now on. This tax will need to be added to all storage charges collected, whether paid by check or ACH. Please add \$1.75 tax to the present \$25.00 per month, and \$3.15 to the \$45.00 per month storage rate, respectively.

If you have any questions regarding this, please feel free to contact our Office. Thank you and we look forward to another fun season here at Winterset.

cc: Joel Weaver, Regional Manager

Welcome



You may know Martha Benjamin as our custodial person but we are now introducing her as the new Administrative Assistant at Winterset RV Resort. She will be taking Bobbie Altschul's position as of the 19th of October, 2020. Please stop in and welcome her to the staff.

Bobbie is still living in the park, just retiring!

Wednesday Coffee and Meetings have started again!

Winterset RV Resort is back to having their Wednesday Morning meeting starting at 8:30 a.m. Due to the pandemic, no refreshments or pastry is being provided.



Winterset Resort

LOT 50

NEW HOME

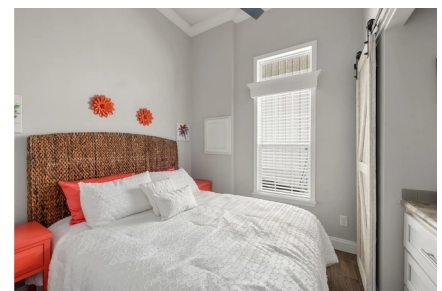
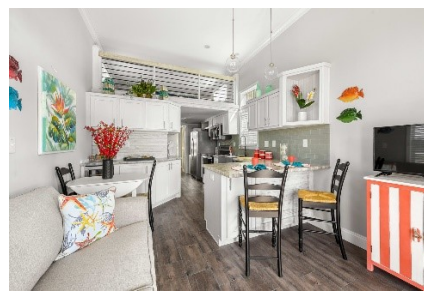
COMING SOON

Pet Friendly Lot

Introductory Price

\$ 72,900

Contact Resort Office



All Pictures shown are of model home, for illustration purpose only. Actual home may vary.

Coming soon. Brand new Champion Loft Home with front porch. Two-tone gray siding. Florida décor. Includes appliances, washer & dryer, and shed. Pet Friendly Lot.

We endorse the Fair Housing Act and qualify each application equally. We value every person: regardless of their race, color, religion, national origin, age, disability, genetics or genetic information, familial status, gender, sexual orientation, gender identity or expression or veteran status. We use a national agency to consistently qualify potential customers using a written guideline including credit reports, criminal background checks and public records available.

Winterset RV Resort 8515 US Hwy. 41 N. Palmetto, FL 34221 941-722-4884 winterset@newbymanagement.com